

**BALDOR® • RELIANCE** 

**Product Information Packet**

**EM2551T-8**

**75HP,1780RPM,3PH,60HZ,365T,A36056M,DP,F1**

Part Detail							
Revision:	J	Status:	PRD/A	Change #:		Proprietary:	No
Type:	AC	Elec. Spec:	A36WG1039	CD Diagram:	416820-015	Mfg Plant:	
Mech. Spec:		Layout:	611750-501	Poles:	04	Created Date:	09-23-2011
Base:		Eff. Date:	02-24-2017	Leads:	6#2		

Specs			
Catalog Number:	EM2551T-8	Heater Indicator:	No Heater
Enclosure:	DP	Insulation Class:	F
Frame:	365T	Inverter Code:	Inverter Ready
Frame Material:	Iron	KVA Code:	G
Output @ Frequency:	75.000 HP @ 60 HZ	Lifting Lugs:	No Lifting Lugs
Synchronous Speed @ Frequency:	1800 RPM @ 60 HZ	Motor Lead Quantity/Wire Size:	6 @ 2 AWG
Voltage @ Frequency:	200.0 V @ 60 HZ	Motor Type:	A36056M
XP Class and Group:	None	Mounting Arrangement:	F1
XP Division:	Not Applicable	Power Factor:	86
Agency Approvals:	CCSA US	Product Family:	Other
	CSA EEV	Pulley End Bearing Type:	Ball
Auxillary Box:	No Auxillary Box	Pulley Face Code:	Standard
Base Indicator:	Rigid	Shaft Ground Indicator:	No Shaft Grounding
Bearing Grease Type:	Polyrex EM (-20F +300F)	Shaft Rotation:	Reversible
Current @ Voltage:	198.950 A @ 200.0 V	Shaft Slinger Indicator:	Shaft Slinger
Design Code:	B	Speed Code:	Single Speed
Drip Cover:	No Drip Cover	Motor Standards:	Other
Duty Rating:	CONT	Starting Method:	Part Winding

<b>Feedback Device:</b>	NO FEEDBACK	<b>Thermal Device - Bearing:</b>	None
		<b>Thermal Device - Winding:</b>	None

Nameplate NP2377L									
CAT.NO.	EM2551T-8	SPEC NO.	P36G3422						
HP	75	AMPS	199	VOLTS	200	DESIGN	B		
FRAME	365T	RPM	1780	HZ	60	AMB	40	SF	1.15
DRIVE END BEARING	65BC03J30X	PHASE	3	DUTY	CONT	INSUL.CLASS	F		
OPP D.E. BEARING	65BC03J30X	TYPE	P	ENCL	DP	CODE	G		
SER.NO.		POWER FACTOR	86	NEMA-NOM-EFFICIENCY	95				
		MAX CORR KVAR	15	GUARANTEED EFFICIENCY	94.5				
		NEMA NOM/CSA QUOTED EFF							
		MOTOR WEIGHT	783						

Nameplate NP2496L

MOBIL POLYREX EM

Parts List		
Part Number	Description	Quantity
SA231159	SA P36G3422	1.000 EA
RA218176	RA P36G3422	1.000 EA
NP2377L	SS SUPER-E CC CSA-C US CSA-EEV (LASER)	1.000 EA
034180034HA	KEY 5/8X5/8X4-1/4 L	1.000 EA
415045002E	SLGR	1.000 EA
032376004JB	RHMS 10-32X1/2PLTD-360	3.000 EA
032376004JB	RHMS 10-32X1/2PLTD-360	3.000 EA
HW1000A32	5/16 FL WASHER WIDE, ID=.344, OD=1.125	3.000 EA
032509020C	CARRIAGE BOLT - 360	3.000 EA
421948058	LABEL, MYLAR	1.000 EA
035000001A	ALFTG 1/8" 1610-BL	1.000 EA
034690002AB	PPLG 1/4" PLTD.	1.000 EA
034017009AB	LCKW NO.10 PLATED-360	3.000 EA
034001009AB	WSHR #10 PLATED-360	3.000 EA
085920052A	BRKT 360 085920051WCC KB	1.000 EA
085920052A	BRKT 360 085920051WCC KB	1.000 EA
078556001A	BAFFL 360 SUB PAINT	1.000 EA
032018028DK	HHCS 1/2-13X3-1/2 PLTD.	4.000 EA
032018024CK	HHCS 3/8-16X3 PLTD.	3.000 EA
076708000BB	CONDUIT BOX-360	1.000 EA
065776000C	GASKET, MAIN CBOX, 320-400	1.000 EA
076709000A	C/B Cover - 360	1.000 EA
067053000B	GASK 320-400	1.000 EA
032018010CK	HHCS 3/8-16X1-1/4 PLTD. 032018010CR	4.000 EA

Parts List (continued)		
Part Number	Description	Quantity
033512008LB	HHTTS 1/4-20X1 PLATED	4.000 EA
034000014AB	WSH ID.406 OD.812 TH.065	4.000 EA
415000103H	T/LUG #2AWG-4/0AWG	1.000 EA
078556001A	BAFFL 360 SUB PAINT	1.000 EA
032018028DK	HHCS 1/2-13X3-1/2 PLTD.	4.000 EA
048897010DG	PLUG,ODE BRKT - 360	1.000 EA
048977006J	GRFTG - 440	1.000 EA
034017009AB	LCKW NO.10 PLATED-360	3.000 EA
032018024CK	HHCS 3/8-16X3 PLTD.	3.000 EA
034001009AB	WSHR #10 PLATED-360	3.000 EA
035000001A	ALFTG 1/8" 1610-BL	1.000 EA
034690002AB	PPLG 1/4" PLTD.	1.000 EA
410700004F	WSHR	1.000 EA
033775004EA	DRSCR #6-1/4 304 S.S.	2.000 EA
000613006PU	N/P (RELEASE QTY 10,000) UL CSA LABEL	1.000 EA
000692000VD	LABEL WARNING	1.000 EA
004824015A	GREASE POLYREX EM	0.540 LB
MG1025Y17	WILKOFAS, 789.701, SUPER E PEARL GOLD	0.250 GA
NP2496L	MOTOR LUBE NAMEPLATE	1.000 EA
14PA1000	PACKAGING 314 GROUP COMBINED PRINT	1.000 EA
032018005DL	1/2-13 X 5/8 SILICON BRONZE HHCS	1.000 EA

<b>Accessories</b>		
<b>Part Number</b>	<b>Description</b>	<b>Multiplier</b>
14-1401	C FACE KIT	A8
14EP1601A01SP	D-FLANGE KIT	A8

REL. S.O.	FRAME	HP	TYPE	PHASE/HERTZ	RPM	VOLTS
	365T	75	P	3/60	1780	200
AMPS	DUTY	AMB °C/INSUL.	S.F.	NEMA DESIGN	CODE LETTER	ENCL.
199	CONT	40/B	1.15	B	G	PBXE
E/S	ROTOR	TEST S.O.	TEST DATE	STATOR RES. @25 °C OHMS (BETWEEN LINES)		
491496	418141-34-YE	---	---	.0170		

PERFORMANCE

LOAD	HP	AMPERES	RPM	POWER FACTOR %	EFFICIENCY %
NO LOAD	0	70.0	1800	3.67	0
1/4	18.8	84.2	1796	51.5	93.2
2/4	37.5	115	1791	73.5	95.3
3/4	56.2	155	1786	82.1	95.4
4/4	75.0	199	1781	85.5	95.0
5/4	93.8	248	1775	86.5	94.3
SPEED TORQUE					
		RPM	TORQUE % FULL LOAD	TORQUE LB.-FT.	AMPERES
LOCKED ROTOR		0	178	393	1233
PULL UP		506	162	358	1164
BREAKDOWN		1701	252	557	706
FULL LOAD		1781	100	221	199

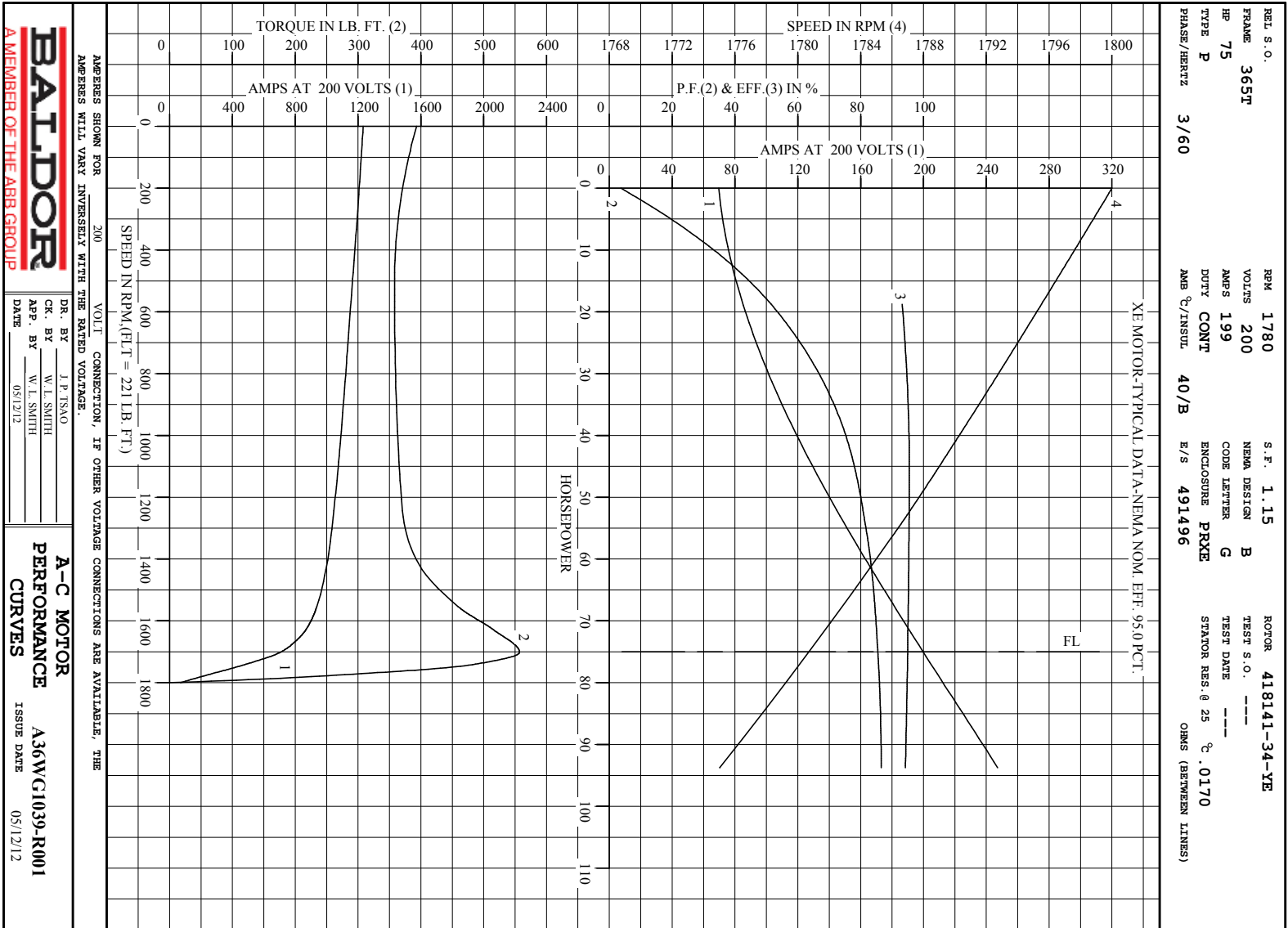
AMPERES SHOWN FOR 200. VOLT CONNECTION. IF OTHER VOLTAGE CONNECTIONS ARE AVAILABLE, THE AMPERES WILL VARY INVERSELY WITH THE RATED VOLTAGE

REMARKS : XE MOTOR-TYPICAL DATA-NEMA NOM. EFF. 95.0 PCT.



DR. BY J. P. TSNO  
 CK. BY W. I. SMITH  
 APP. BY W. I. SMITH  
 DATE 05/12/12

A-C MOTOR PERFORMANCE DATA  
 A36WG1039-R001  
 ISSUE DATE 05/12/12



AMPERES SHOWN FOR 200 VOLT CONNECTION, IF OTHER VOLTAGE CONNECTIONS ARE AVAILABLE, THE AMPERES WILL VARY INVERSELY WITH THE RATED VOLTAGE.

**BALDOR**  
A MEMBER OF THE ABB GROUP

DR. BY	J. P. TSAO
CHK. BY	W. L. SMITH
APP. BY	W. L. SMITH
DATE	05/12/12

**A-C MOTOR PERFORMANCE CURVES**

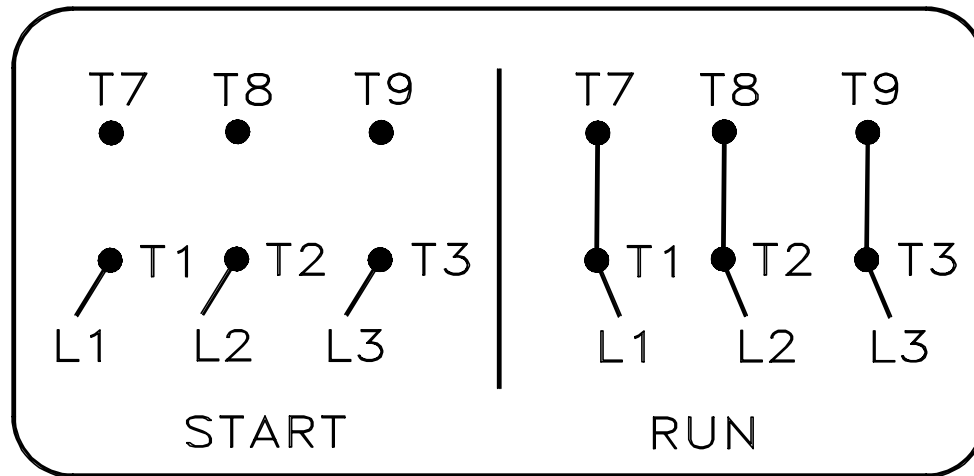
A36W/G1039-R001  
ISSUE DATE 05/12/12

Printed on 6/18/15 12:24 @ bengap01.baldor.com



416820-015

# A-C MOTOR CONNECTION DIAGRAM PART WINDING START



(N.P. 1767-1-A)

416820-015

REV. DESC: -ADDED JUMPERS TO "RUN" CONNECTIONS		
REV. LTR: A	VERSION: 01	TDR: 000000558689
FILE: \MGA\00000\668	REVISED: 09: 44: 55 09/20/2010	
MTL: -	BY: MGH TLC	

**BALDOR**

CONN DIAG - PART WINDING START

SH 1 of 1

Marketing maintained PDF of MN408:

<http://www.baldor.com/support/Literature/Load.ashx/MN408?ManNumber=MN408>

Marketing maintained PDF of MN416:

<http://www.baldor.com/support/Literature/Load.ashx/MN416?ManNumber=MN416>